

The Contractor is to check and verify all building and site dimensions, levels, sewer invert levels and positions of drains before works start. Any discrepancy to be notified to Jones AD. DO NOT SCALE FROM THIS DRAWING. This drawing and the building works depicted are the copyright of Jones AD. and may not be reproduced or amended except by written permission. No liability will be accepted for amendments made by other persons.

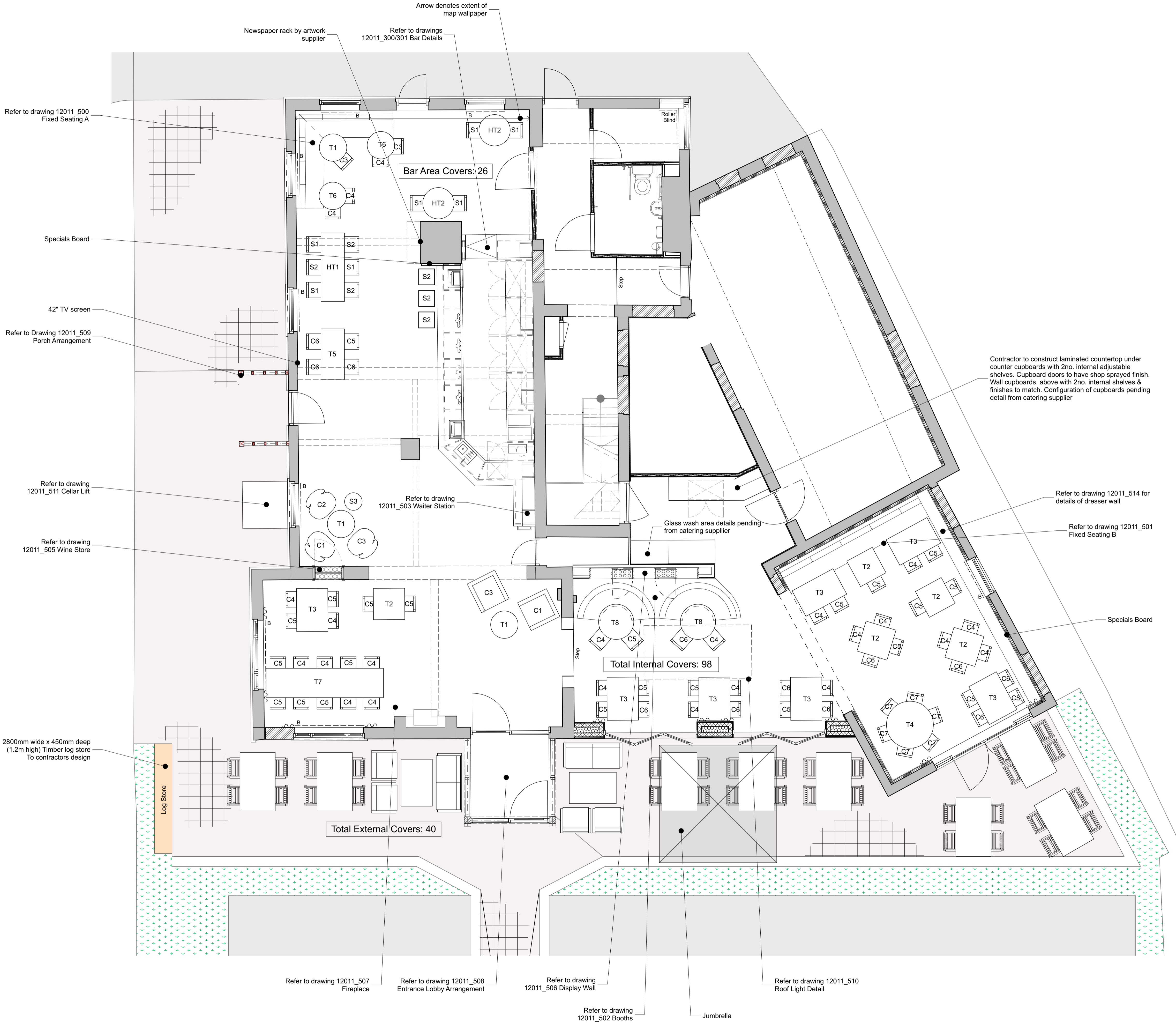
FURNITURE KEY:

Refer to 12011_903 Furniture Schedule for details

Ref	Type	Quantity
S1	High Stool	7
S2	High Stool	6
S3	Low Stool	1
C1	Wing Back Chair	2
C2	Feature Timber Chair	1
C3	Lounge Chair	4
C4	Existing Dining Chair	23
C5	Dining Chair	12
C6	Dining Chair	6
C7	Dining Chair	6
HT1	Poseur Table	1
HT2	Copper topped high table	2
T1	Copper topped 600di table	3
T2	750x750mm table	5
T3	750x1200mm table	7
T4	1200di table	1
T5	600x1300mm table	1
T6	600di table	2
T7	3000x750mm table	1
T8	900di table	2

KEY:

- B Roman Blinds
- ~ Curtains



Rev.	Date	Drn.	Chk.	Revision
A	28.08.15	BH	WJ	ISSUED FOR CONSTRUCTION
T2	06.08.15	BH		Waitress station & Barn updated
T1	01.06.15	BH	APJ	General Updates / Issued for tender
P2	28.04.15	BH		External Layout Updated
P1	10.04.15	BH		Layout Updated

PROJECT
 RED MIST PROPERTY LTD
 PROPOSED RENOVATIONS & ALTERATIONS
 THE ROYAL EXCHANGE, BORDON

DRAWING
 GENERAL ARRANGEMENT

SCALE	1 : 50 @ A1	CHECKED	APJ
DATE	MARCH 2015	DRAWN	BH
DWG. No.	12011_212	REVISION	A

Jones AD
 Steepleton Lodge Barn,
 Long Lane,
 East Haddon,
 NN6 8DU
 T: 01604 211 470
 E: info@jones-ad.co.uk
 www.jones-ad.co.uk

JONES
 architecture + design

CONSTRUCTION